



REPRODUCTIVE – ANDROGENS

Kit	Cat #	Method	Type	Tests	Max. activity kBq
Androstenediol glucuronide	DSL9200	RIA	CT	100	185
Androstenedione	IM0674	RIA	CT	100	185
Androstenedione	DSL3800	RIA	CT	100	185
DHEA	IM1138	RIA	CT	100	185
DHEA	DSL8900	RIA	HP	100	185
DHEA sulfate	IM0729	RIA	CT	100	185
DHEA-S-7	DSL2700	RIA	HP	100	185
Dihydrotestosterone	DSL9600i	RIA	CT	100	185
Dihydrotestosterone RUO	DSL9600	RIA	CT	100	185
Free Testosterone	DSL4900	RIA	CT	100	185
SHBG	IM3532	IRMA	CT	100	370
Testosterone	IM1087	RIA	CT	100	185
Testosterone direct	IM1119	RIA	CT	100	185

Kit	Sensitivity	Incubation time	Calibrator range	Sample	
				Vol. [μ L]	Form
Androstenediol glucuronide	0.4 ng/mL	3 hrs/RT; SH	0; 0.5-100 ng/mL	100	s; p
Androstenedione	0.04 ng/mL	1 hr/37°C	0; 0.1-15 ng/mL	100	ex: s; p
Androstenedione	0.03 ng/mL	40 min /37°C	0; 0.1-10 ng/mL	50	s; p
DHEA	0.3 ng/mL	1 hr/37°C	0; 0.5-30 ng/mL	100	ex: s; p
DHEA	0.009 ng/mL	1 hr/37°C+15 min/RT	0; 0.2-25 ng/mL	100	s; p
DHEA sulfate	6 μ g/100 mL	30 min/37°C	0; 10-1000 μ g/100 mL	25	s; p
DHEA-S-7	25 ng/mL	30 min/37°C	0; 50-8000 ng/mL	25	s
Dihydrotestosterone	4 pg/mL	2 hrs/RT; SH	0; 25-2500 pg/mL	100	ex: s; p
Dihydrotestosterone RUO	4 pg/mL	2 hrs/RT; SH	0; 25-2500 pg/mL	100	ex: s; p
Free Testosterone	0.18 pg/mL	1 hr/37°C	0; 0.25-100 pg/mL	50	s
SHBG	0.28 nM	2 hrs/RT; SH	0; 3.3-300 nM	20	s
Testosterone	0.04 ng/mL	1 hr/37°C	0; 0.1-20 ng/mL	50	ex: s; p
Testosterone direct	0.025 ng/mL	3 hrs/37°C	0; 0.07-20 ng/mL	50	s; p

AVAILABLE SEPARATELY

Reagent	Cat #
Extraction vials	IM3284
Caps for extraction vials	IM3290

Reagent	Cat #
Recovery buffer (30 mL)	IM1030



REPRODUCTIVE - FERTILITY

Kit	Cat #	Method	Type	Tests	Max. activity kBq
17 α -Hydroxyprogesterone	IM1452	RIA	CT	100	185
Estradiol	A21854	RIA	CT	100	142
Ultra-sensitive Estradiol	DSL4800	RIA	HP	100	185
Estrone	DSL8700	RIA	HP	100	185
Estrone-sulfate	DSL5400	RIA	HP	100	185
FSH	IM2125	IRMA	CT	100	370
	IM3301			400	4x370
LH	IM1381	IRMA	CT	100	370
	IM3302			400	4x370
Prolactin	IM2121	IRMA	CT	100	370
	IM3303			400	4x370
Progesterone	IM1188	RIA	CT	100	185

Kit	Sensitivity	Incubation time	Calibrator range	Sample	
				Vol. [μ L]	Form
17 α -Hydroxyprogesterone	0.06 ng/mL	3 hrs/37°C	0; 0.1-50 ng/mL	50	s; p
Estradiol	6 pg/mL	3 hrs/RT; SH	0; 8-5000 pg/mL	100	s; p
Ultra-sensitive Estradiol	2.2 pg/mL	1 hr+2 hrs+20 min/RT	0; 5-750 pg/mL	200	s; p
Estrone	1.2 pg/mL	1 hr+15 min/RT	0; 15- 2000 pg/mL	50	s; p
Estrone-sulfate	0.01 ng/mL	3 hrs/RT; SH+ 15 min/RT	0; 0.05-80 ng/mL	100	s; p
FSH	0.2 IU/L	90 min/RT; SH	0; 0.5-180 IU/L	100	s; p
LH	0.2 IU/L	90 min/RT; SH	0; 0.5-180 IU/L	100	s; p
Prolactin	0.5 ng/mL	1 hr/RT; SH	0; 1-200 ng/mL	50	s; p
Progesterone	0.03 ng/mL	1 hr/RT	0; 0.1-60 ng/mL	50	s; p

AVAILABLE SEPARATELY

Reagent	Cat #
Estradiol diluent (10 mL)	IM1863

Reagent	Cat #
Precipitation reagent (50 mL)	A09775



REPRODUCTIVE - PRENATAL SCREENING

Kit	Cat #	Method	Type	Tests	Max. activity kBq
AFP	IM1441	IRMA	CT	100	320
	IM3285	IRMA	CT	400	4x320
AFP-screening	A37404	IRMA	CT	100	320
hCG-screening	IM2235	RIA	CT	100	325
Unconjugated estriol	IM3594	RIA	CT	100	300
PAPP-A	A08553	IRMA	CT	100	370

Kit	Sensitivity	Incubation time	Calibrator range	Sample	
				Vol. [μ L]	Form
AFP	0.2 IU/mL	15 min/RT; SH+30 min/RT; SH	0; 3-400 IU/mL	50	s; a
AFP-screening	0.2 IU/mL	45 min/RT; SH	0; 5-220 IU/mL	50	s; a
hCG-screening	2.5 kIU/L	1 hr/RT; SH	0; 7-250 kIU/L	50	s; p
Unconjugated estriol	0.03 ng/mL	30 min/RT; SH	0; 0.1-30 ng/mL	50	s
PAPP-A	0.004 IU/L	90 min/RT; SH	0; 0.1-10 IU/L	20	s



THYROID FUNCTION

Kit	Cat #	Method	Type	Tests	Max. activity kBq
Anti-hTg	IM3223	IRMA	CT	100	325
Anti-TPO	A56719	RIA	CT	100	640
Anti R-TSH	A15728	RRA	CT	60	100
	A54464	RRA	CT	100	180
FT3	IM1579	RIA	CT	100	225
	IM3320	RIA	CT	400	4x225
FT4	IM1363	RIA	CT	100	310
	IM3321	RIA	CT	400	4x310
Thyroglobulin	A85726	IRMA	CT	100	480
TSH	IM3712/IM3459	IRMA	CT	100	515
	IM3713/IM3461	IRMA	CT	400	4x515
TT3	IM1699	RIA	CT	100	165
	IM3287	RIA	CT	400	4x165
TT4	IM1447	RIA	CT	100	110
	IM3286	RIA	CT	400	4x110
T3 uptake	A30282	RIA	CT	100	260

Kit	Sensitivity	Incubation time	Calibrator range	Sample	
				Vol. [μ L]	Form
Anti-hTg	5 IU/mL	90 min+1 hr/RT; SH	0; 30-3000 IU/mL	20	s; p
Anti-TPO	2 IU/mL	1 hr/RT; SH	0; 7-2500 IU/mL	20	s
Anti R-TSH	0.3 U/L	2 hrs+1 hr/RT; SH	0; 1-40 U/L	100	s
FT3	0.5 pM	2 hrs/RT; SH	0; 2-40 pM	100	s; p
FT4	0.5 pM	1 hr/RT; SH	0; 2.5-75 pM	25	s; p
Thyroglobulin	0.3 ng/mL	2 hrs/RT; SH+18-20hrs/RT	0; 0.75-600 ng/mL	50 (100)	s; p
TSH	0.025 mIU/L	1 hr/RT; SH	0; 0.15-50 mIU/L	100	s; p
TT3	0.1 nM	1 hr/RT; SH	0; 0.75-12 nM	50	s; p
TT4	13 nM	1 hr/RT; SH	0; 25-400 nM	20	s; p
T3 uptake	N.A.	1 hr/RT	N.A.	20	s



ALLERGY

Kit	Cat #	Method	Type	Tests	Max. activity kBq
Histamine	IM1659	RIA	CT	100	148
Histamine RUO	IM2588	RIA	CT	100	148
Specific IgE	IM0744	IRMA	Tracer	N.A.	222
Total IgE	IM2122	IRMA	CT	100	111

Kit	Sensitivity	Incubation time	Calibrator range	Sample	
				Vol. [μ L]	Form
Histamine	0.2 nM	2 hrs/4°C; SH	0; 1-100 nM	100	p; u; c; d
Histamine RUO	0.2 nM	2 hrs/4°C; SH	0; 1-100 nM	100	p; u; c; d
Total IgE	0.05 kIU/L	30 min+1 hr/RT; SH	0; 0.5-100 kIU/L	100	s; p



TUMOR MARKERS

Kit	Cat #	Method	Type	Tests	Max. activity kBq
AFP	IM1441	IRMA	CT	100	320
	IM3285	IRMA	CT	400	4x320
α -Subunit	IM1186	IRMA	CT	100	370
β 2-Microglobulin	IM1113	RIA	CT	100	148
CA 125 Antigen	IM2233	IRMA	CT	100	480
MUC-1 (CA 15-3)	IM2397	IRMA	CT	100	600
CA 19-9 Antigen	IM3151	IRMA	CT	100	310
CEA	IM2204	IRMA	CT	100	640
	IM2274	IRMA	CT	400	4x640
Free β -hCG	IM2459	IRMA	CT	100	650
hCG	IM2110	IRMA	CT	100	650
	IM2209	IRMA	CT	400	4x650
Cytokeratin 19 Fragment	A56888	IRMA	CT	50	360
NSE	A15607	IRMA	CT	50	260
PSA total	IM1950	IRMA	CT	100	580
PSA free	IM2520	IRMA	CT	50	275
Thymidine Kinase	IM1948	REA	N.A.	50	190

Kit	Sensitivity	Incubation time	Calibrator range	Sample	
				Vol. [μ L]	Form
AFP	0.2 IU/mL	15 min+30 min/RT; SH	0; 3-400 IU/mL	50	s; a
α -Subunit	0.025 IU/L	1 hr/RT; SH	0; 0.1-10 IU/L	100	s; p
β 2-Microglobulin	0.1 mg/L	90 min/RT; SH	0; 0.25-30 mg/L	50	s; p; u
CA 125 Antigen	1 U/mL	4 hrs/RT; SH	0; 12-400 U/mL	100	s; p
MUC-1 (CA 15-3)	0.15 U/mL	2 hrs+1 hr/RT; SH	0; 15-250 U/mL	20	s; p
CA 19-9 Antigen	2 U/mL	2 hrs+1 hr/RT; SH	0; 15-480 U/mL	50	s
CEA	0.2 ng/mL	2 hrs/RT; SH	0; 1-320 ng/mL	50	s; p
Free β -hCG	0.05 ng/mL	1 hr+30 min/RT; SH	0; 0.3-200 ng/mL	100	s; p
hCG	1 IU/L	1 hr/RT; SH	0; 7.5-750 IU/L	50	s; p
Cytokeratin 19 Fragment	0.2 ng/mL	18-22 hrs/2-8°C	0; 1-110 ng/mL	100	s
NSE	0.3 ng/mL	2 hrs/RT; SH	0; 2-200 ng/mL	50	s
PSA total	0.1 ng/mL	2 hrs/RT; SH	0; 1-100 ng/mL	100	s; p
PSA free	0.02 ng/mL	2 hrs/RT; SH	0; 0.3-30 ng/mL	200	s; p
Thymidine Kinase	2.5 U/L	210 min/37°C+30 min/RT	0; 2.5-80 U/L	25	s; p



SKELETAL

Kit	Cat #	Method	Type	Tests	Max. activity kBq
Ostase	A44176	IRMA	CT	100	650
PTH	A11930	IRMA	CT	100	855
PTHrP RUO	DSL8100	IRMA	CT	100	370

Kit	Sensitivity	Incubation time	Calibrator range	Sample	
				Vol. [μ L]	Form
Ostase	2 μ g/L	18-20 hrs/2-8 °C	0; 7.5-120 μ g/L	100	s
PTH	2 pg/mL	2 hrs+2 hrs/RT; SH	0; 10-2500 pg/mL	200	s; p
PTHrP RUO	3 pg/mL	16-22 hrs/RT; SH	0; 25-2000 pg/mL	200	p



ADRENAL FUNCTION

Kit	Cat #	Method	Type	Tests	Max. activity kBq
ACTH	IM2030	IRMA	CT	100	814
Aldosterone	IM1664	RIA	CT	100	145
Aldosterone	DSL8600	RIA	CT	100	185
Angiotensin I	IM3518	RIA	CT	100	260
Cortisol	IM1841	RIA	CT	100	185
Renin	DSL25100	IRMA	CT	100	370

Kit	Sensitivity	Incubation time	Calibrator range	Sample	
				Vol. [μ L]	Form
ACTH	1.2 pg/mL	1 hr+2 hrs/RT; SH	0; 9.8-1500 pg/mL	500	p
Aldosterone	6 pg/mL	3 hrs/RT; SH	0; 8-2000 pg/mL	50	s; p; u
Aldosterone	7.6 pg/mL	3 hrs/RT; SH	0; 25-1600 pg/mL	100	s; p; u
Angiotensin I	0.1 ng/mL	2 hrs/RT; SH	0; 0.3-30 ng/mL	50	p
Cortisol	10 nM	1 hr/RT; SH	0; 50-2000 nM	50	s; p; u
Renin	0.7 pg/mL	3 hrs/RT; SH	0; 5-500 pg/mL	200	p

AVAILABLE SEPARATELY

Reagent	Cat #
Aldosterone - Solution U (3 mL), must be used with IM1664	IM1736
Aldosterone diluent for serum (2.5 mL), must be used with IM1664	IM2445
Aldosterone zero calibrator (2 mL), must be used with DSL8600	DSL8601

Reagent	Cat #
Aldosterone zero calibrator (12 mL), must be used with DSL8600	A98160
Cortisol zero calibrator (10 mL)	IM1959
Cortisol zero calibrator (250 mL)	IM3444



DIABETES

Kit	Cat #	Method	Type	Tests	Max. activity kBq
Albumin	IM3251	RIA	CT	100	300
Anti-GAD	IM3650	IRMA	HP	50	50
	IM3651	IRMA	HP	100	2x50
Anti-IA2	IM3652	IRMA	HP	50	50
	IM3653	IRMA	HP	100	2x50
Anti-insulin	A36473	IRMA	HP	50	40
	A36474	IRMA	HP	100	2x40
C-peptide	IM3639	IRMA	CT	100	640
Insulin	IM3210	IRMA	CT	100	640

Kit	Sensitivity	Incubation time	Calibrator range	Sample	
				Vol. [μ L]	Form
Albumin	0.5 mg/L	1 hr/RT; SH	0; 1-150 mg/L	50	u
Anti-GAD	0.2 U/mL	2 hrs/RT+1 hr/RT	0; 1-300 U/mL	20	s
Anti-IA2	0.1 U/mL	overnight/RT+1 hr/RT	0; 0.75-50 U/mL	20	s
Anti-insulin	0.032 U/mL	overnight/RT+1 hr/RT	0; 0.5-50 U/mL	20	s
C-peptide	5 pM	2 hrs/RT; SH	0; 30-6400 pM	50	s; p; u
Insulin	0.5 μ IU/mL	2 hrs/RT; SH	0; 3-300 μ IU/mL	50	s; p

AVAILABLE SEPARATELY

Reagent	Cat #
Precipitation reagent (50 mL)	A09775



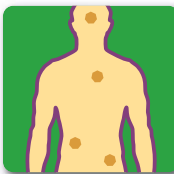
GROWTH

Kit	Cat #	Method	Type	Tests	Max. activity kBq
GH	IM1397	IRMA	CT	100	370
IGF-1	A15729	IRMA	CT	100	370
IGFBP-3	DSL6600	IRMA	CT	100	370

Kit	Sensitivity	Incubation time	Calibrator range	Sample	
				Vol. [μ L]	Form
GH	0.1 mIU/L	1 hr/RT; SH	0; 0.5-100 mIU/L	50	s; p
IGF-1	2 ng/mL	1 hr/RT; SH	0; 30-1200 ng/mL	50	s; p
IGFBP-3	0.5 ng/mL	18-24 hrs/RT; SH	0; 2-100 ng/mL	50	s

AVAILABLE SEPARATELY

Reagent	Cat #
IGFBP-3 zero calibrator (55 mL)	A99225



OTHERS

Kit	Cat #	Method	Type	Tests	Max. activity kBq
cAMP	IM1117	RIA	CT	100	111
Cyclosporine direct	IM3679	RIA	CT	100	250
Ferritin	IM3492	IRMA	CT	100	325

Kit	Sensitivity	Incubation time	Calibrator range	Sample	
				Vol. [μ L]	Form
cAMP	0.2 nM	18 hrs/4°C	0; 5-50 nM	100	p; u
Cyclosporine direct	5 ng/mL	1 hr/RT; SH	0; 40-2000 ng/mL	20	b
Ferritin	1 ng/mL	1 hr/RT; SH	0; 5-1000 ng/mL	20	s; p

AVAILABLE SEPARATELY

Reagent	Cat #
Ferritin zero calibrator (5 mL)	A62362

WASH SOLUTIONS – AVAILABLE SEPARATELY

Reagent	Cat #
Wash solution U	A54825

Reagent	Cat #
Wash solution PSA	A54826

IRMA Immuno Radio Metric Assay
 RIA Radio Immuno Assay
 REA Radio Enzymo Assay
 RRA Radio Receptor Assay
 CT Coated Tubes
 CB Coated Beads
 HP Homogeneous Phase

N.A. Not Applicable
 s Serum
 p Plasma
 a Amniotic Fluid
 u Urine
 b Blood
 ex: Extraction of:

d Solid Biol. Samples
 c Cell Supernatant
 RT Room Temperature
 SH Shaking
 RUO Research Use Only

Not all the products are available in all the countries - please, ask your local distributor.
 This product list is subject to change without further notice.
 All the kits are IVD, CE marked, unless otherwise specified.



Contact:
Beckman Coulter Czech Republic
Murmanska 1475/4, 100 05 Prague 10
Czech Republic
E-mail: imunochem@beckman.com
Web site: www.immunotech.cz

Printed in the Czech Republic